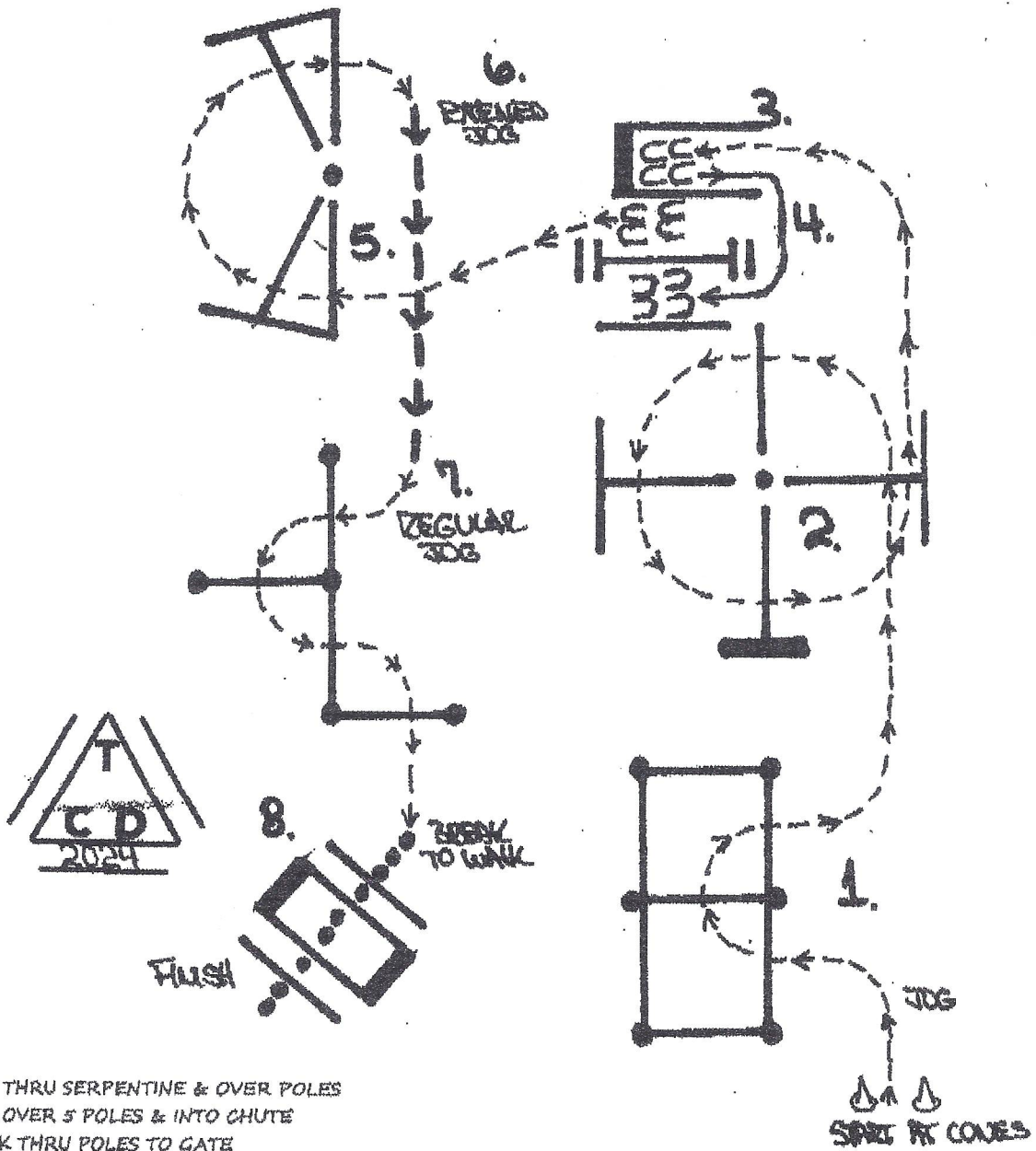


# WINTER BREAKOUT

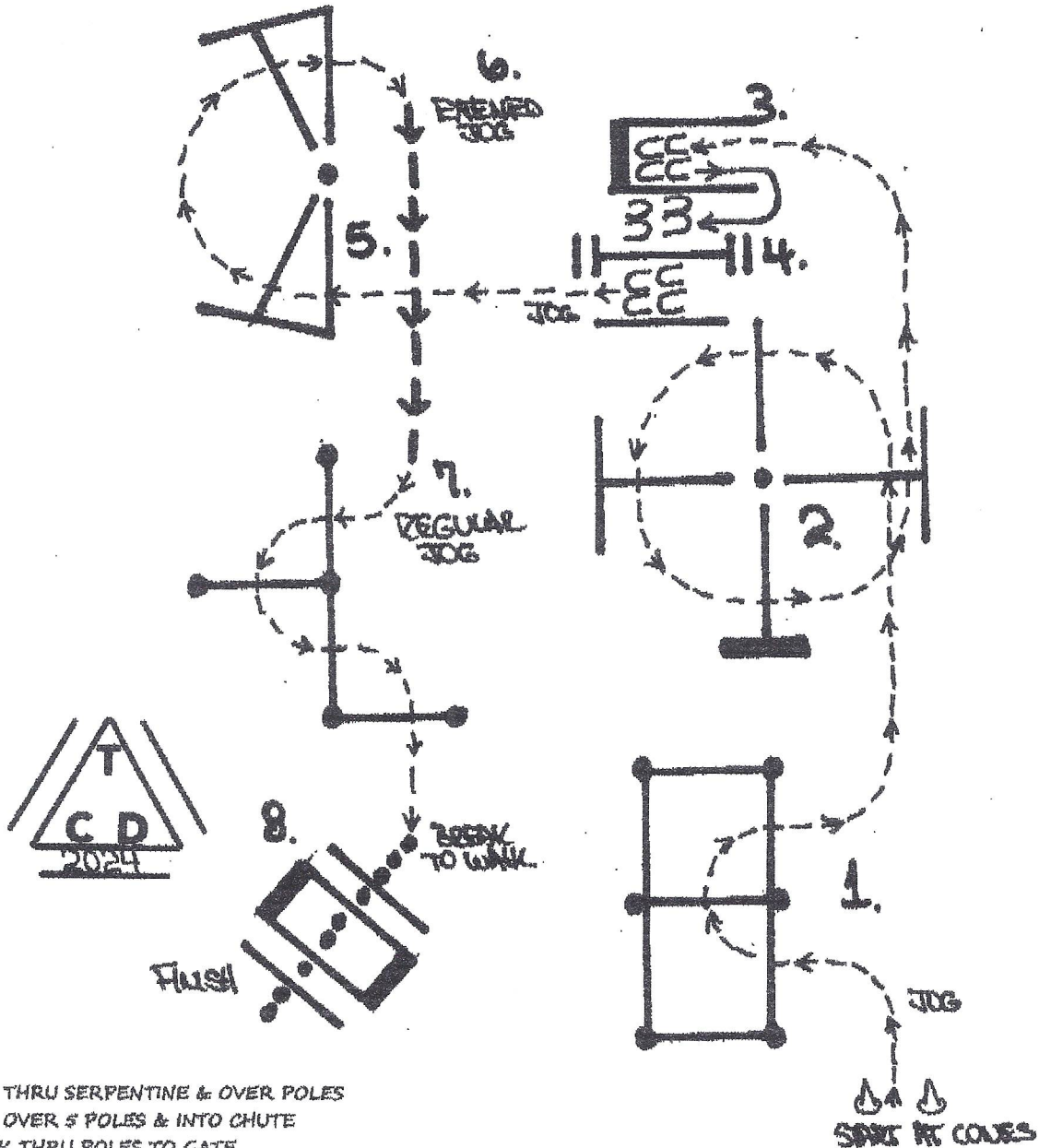
300-OQHA A/B IN HAND 2 + UND



1. JOG THRU SERPENTINE & OVER POLES
2. JOG OVER 5 POLES & INTO CHUTE
3. BACK THRU POLES TO GATE
4. GATE: (LH) WALKTHRU CLOSE
5. JOG OVER 5 POLES
6. EXTENDED JOG
7. REGULAR JOG THRU SERPENTINE & OVER POLES
8. WALK OVER 4 POLES

# WINTER BREAKOUT

- 301-OQHA SMALL FRY W/T A/B
- 302-AQHA-L1 YTH W/T
- 303-AQHA L-2 AMA W/T
- 304-APHA YTH W/T 11-18
- 305-APHA AMA W/T
- 306-APHC YTH PRO W/T 10 + UND
- 307-APHC NON PRO W/T

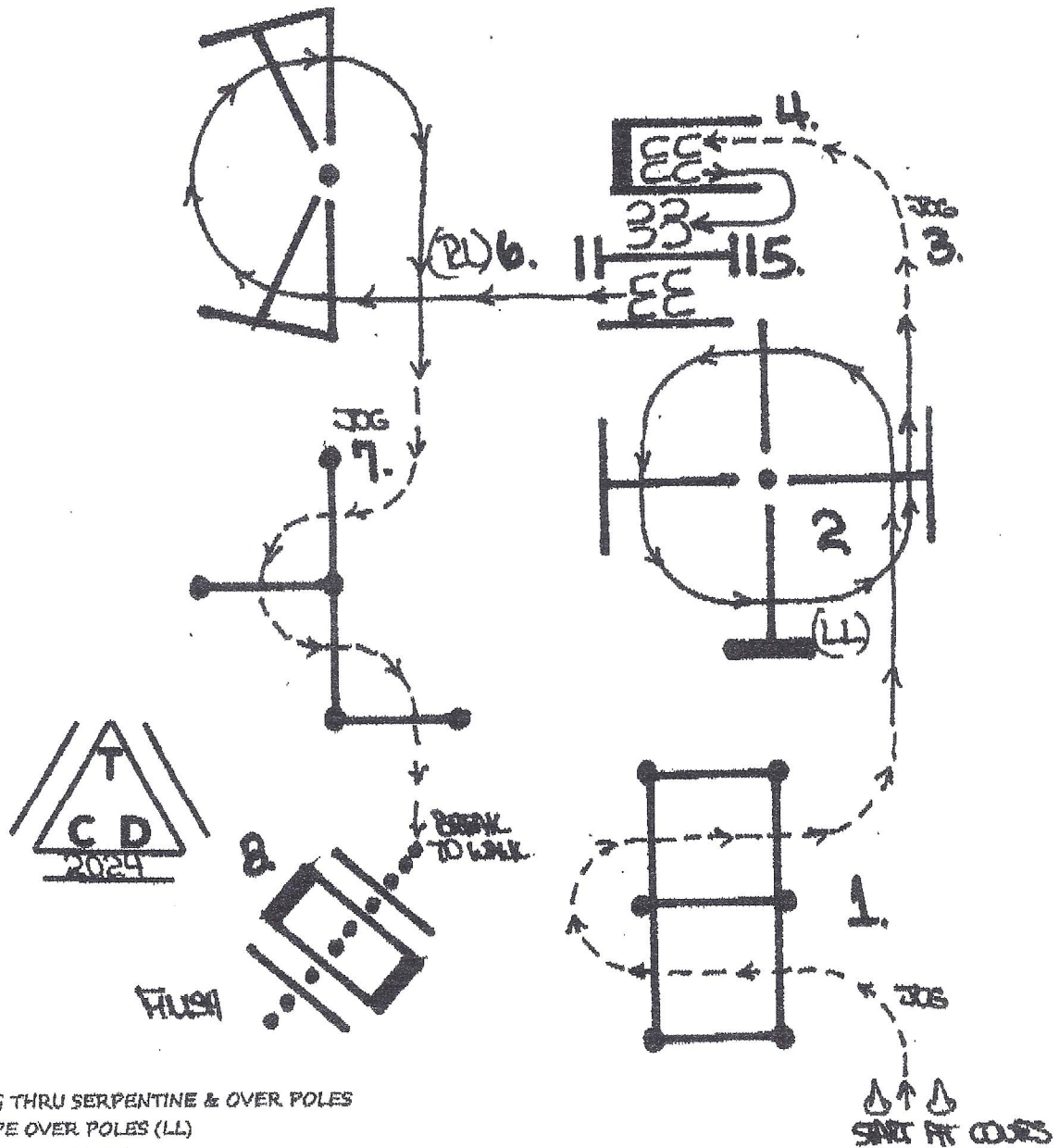


1. JOG THRU SERPENTINE & OVER POLES
2. JOG OVER 5 POLES & INTO CHUTE
3. BACK THRU POLES TO GATE
4. GATE:(RM) RIDE THRU CLOSE
5. JOG OVER 5 POLES
6. EXTENDED JOG
7. REGULAR JOG THRU SERPENTINE & OVER POLES
8. WALK OVER 4 POLES

# WINTER BREAKOUT

308-OQHA A/B 19 + OVER  
 309-OQHA A/B 18 + UND  
 311-AQHA L-1  
 312-AQHA ROOKIE YTH  
 313-AQHA ROOKIE AMA  
 314-AQHA L-1 YTH  
 315-AQHA L-1 AMA

316-APHA GREEN HORSE  
 317-APHA NOV YTH  
 318-APHA NOV AMA  
 319-APHC GREEN HORSE  
 320-APHC NOV NON PRO  
 321-AQHA JR HORSE  
 326-APHA JR HORSE

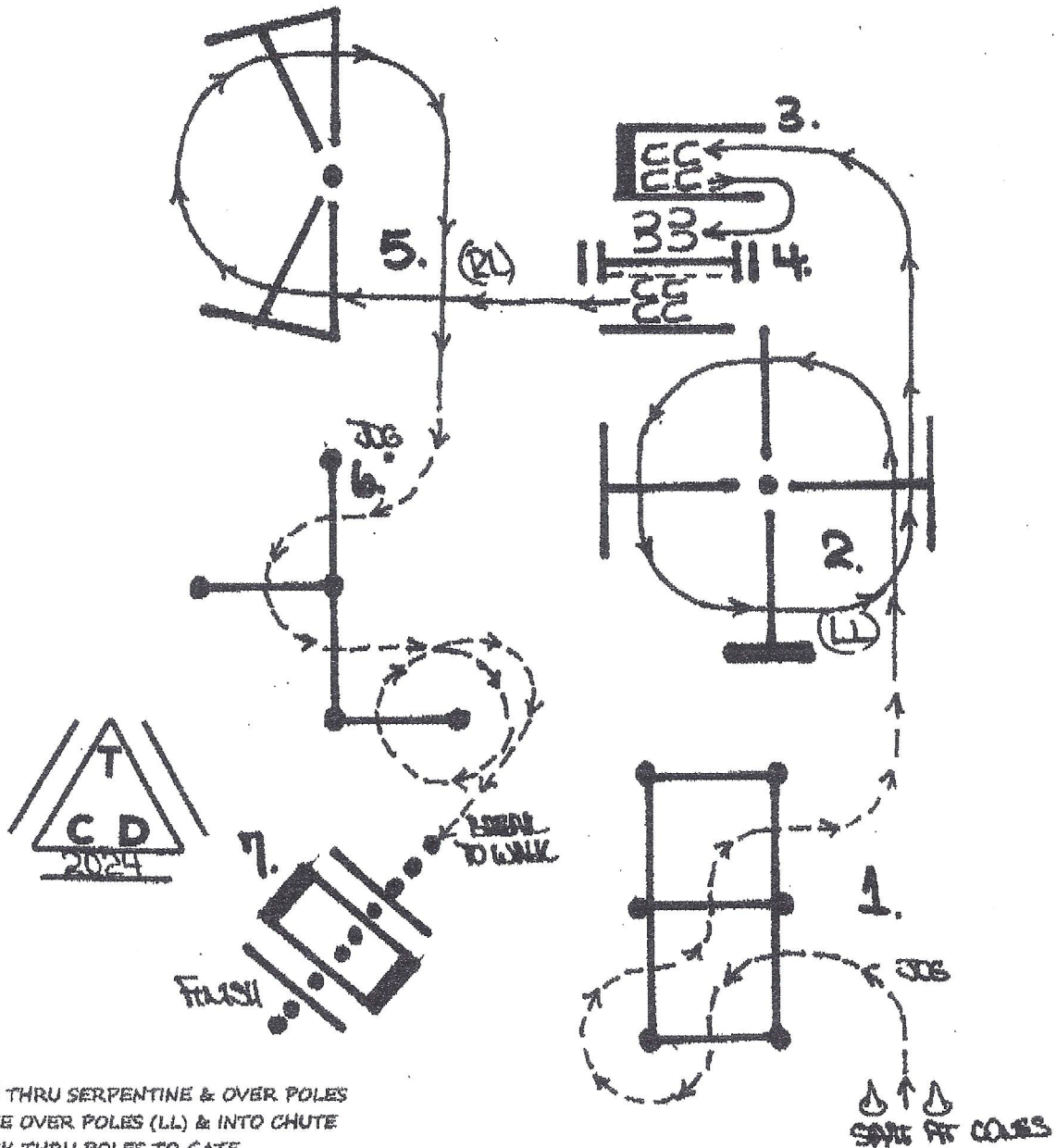


1. JOG THRU SERPENTINE & OVER POLES
2. LOPE OVER POLES (LL)
3. JOG INTO CHUTE
4. BACK THRU POLES TO GATE
5. GATE (RH) RIDE THRU CLOSE
6. LOPE OVER POLES (RL)
7. JOG THRU SERPENTINE & OVER POLES
8. WALK OVER POLES

# WINTER BREAKOUT

322-AQHA 18 & UND  
 323-AQHA SELECT  
 324-AQHA AMA  
 325-AQHA SR HORSE  
 327-APHA YTH  
 328-APHA MASTERS

329-APHA AMA  
 330-APHA SR HORSE  
 331-OQHA A/B OPEN  
 332-APHC YTH  
 333-APHC NON PRO  
 334-APHC OPEN



1. JOG THRU SERPENTINE & OVER POLES
2. LOPE OVER POLES (LL) & INTO CHUTE
3. BACK THRU POLES TO GATE
4. GATE:(RH) RIDE THRU OVER POLE CLOSE
5. LOPE OVER POLES (RL)
6. JOG THRU SERPENTINE & OVER POLES
7. WALK OVER POLES